



PUBLIC MEETING

Draft Program Environmental Impact Report 627 General Aviation Improvement Program



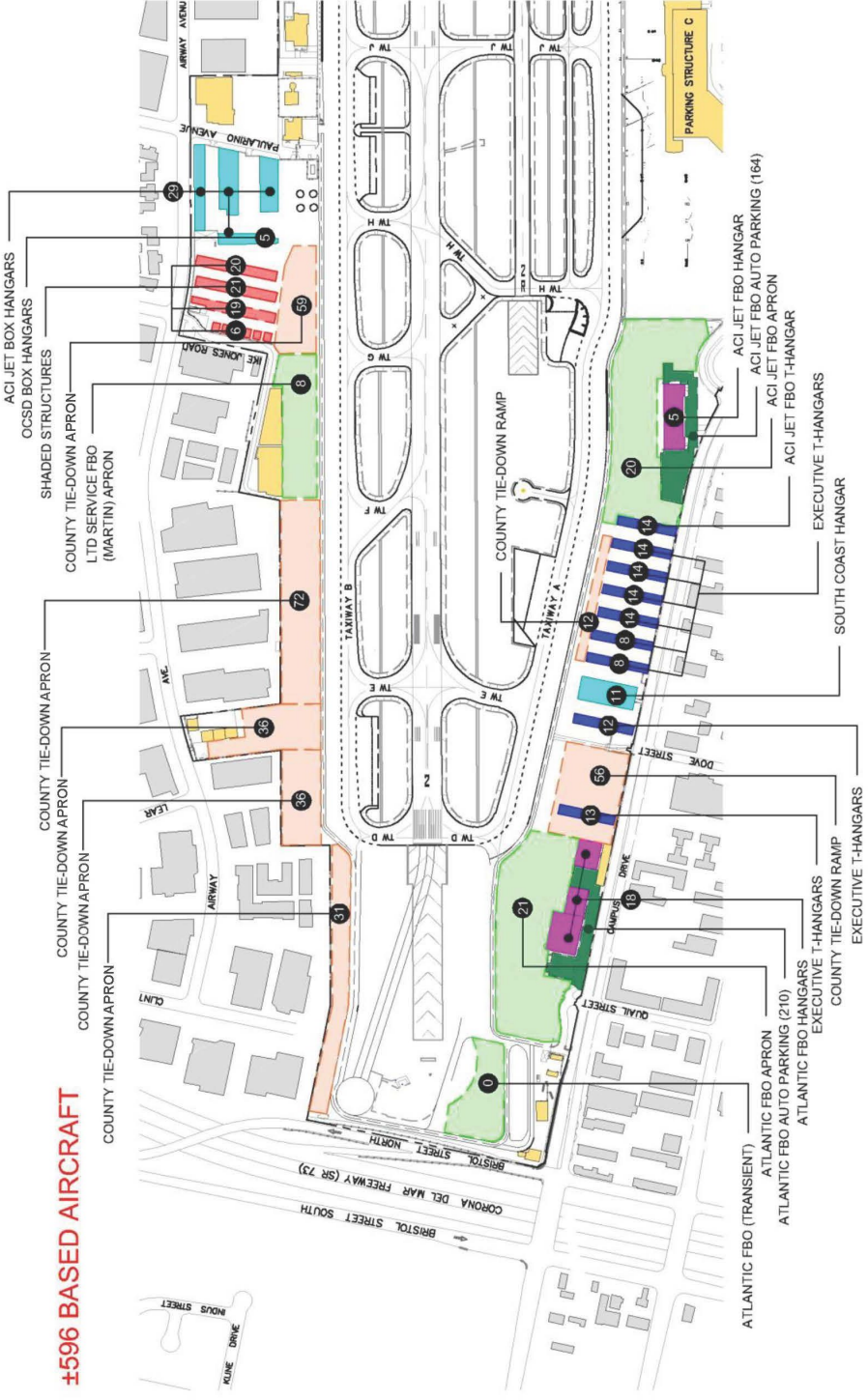
The following information provides a comparative overview of the Proposed Project and alternatives that were evaluated in Draft Program Environmental Impact Report (“EIR”) 627. To facilitate further reference, the table and exhibit reference numbers shown in this hand-out are those used in the EIR.

The following exhibits are provided in this hand-out:

- Conceptual Facilities Layout—Existing Conditions (Exhibit 2-2)
- Conceptual Facilities Layout—Proposed Project (Exhibit 3-1)
- Conceptual Facilities Layout—Alternative 1 (Exhibit 3-4)
- Conceptual Facilities Layout—Alternative 2 (Exhibit 5-1)
- Conceptual Facilities Layout—Alternative 3 (Exhibit 5-3)

Table 1-1 provides a comparison of the key elements of the Proposed Project, Alternative 1, and the other alternatives evaluated in the Alternatives Section of the Draft EIR (Section 5). Table 5-25 provides a comparison of the alternatives’ ability to meet GAIP objectives.

±596 BASED AIRCRAFT



Legend

- On Airport Buildings
- Off Airport Buildings
- Airport Property Line
- FBO Community Hangar
- T-Hangar
- Box Hangar
- FBO Apron (50/50 Based/Transient)
- Tie-Down Apron
- Shade Structures
- Auto Parking
- Number of Aircraft Accommodated

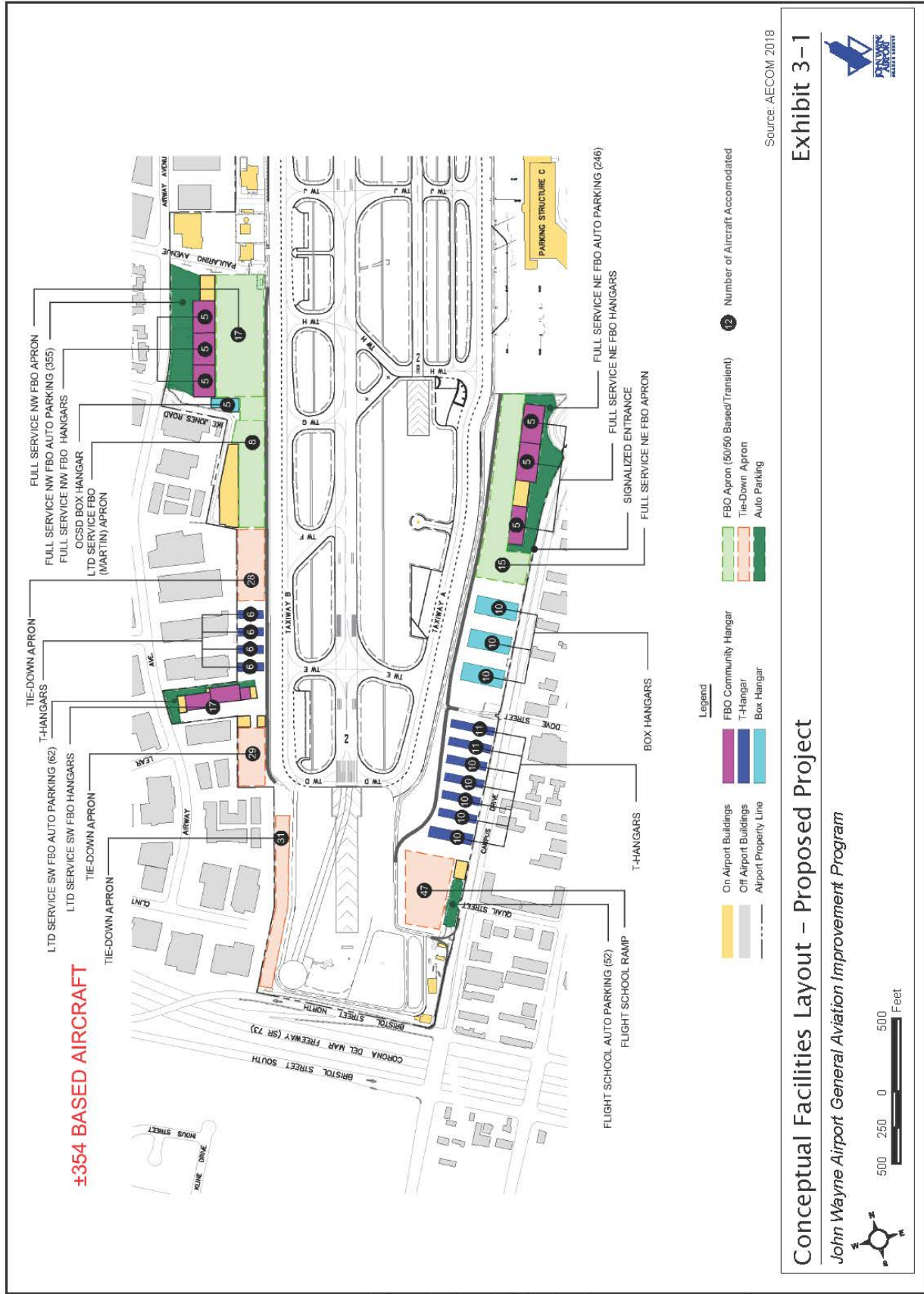
Source: AECOM 2018

Exhibit 2-2

Conceptual Facilities Layout – Existing Facilities

John Wayne Airport General Aviation Improvement Program





Source: AECOM, 2018

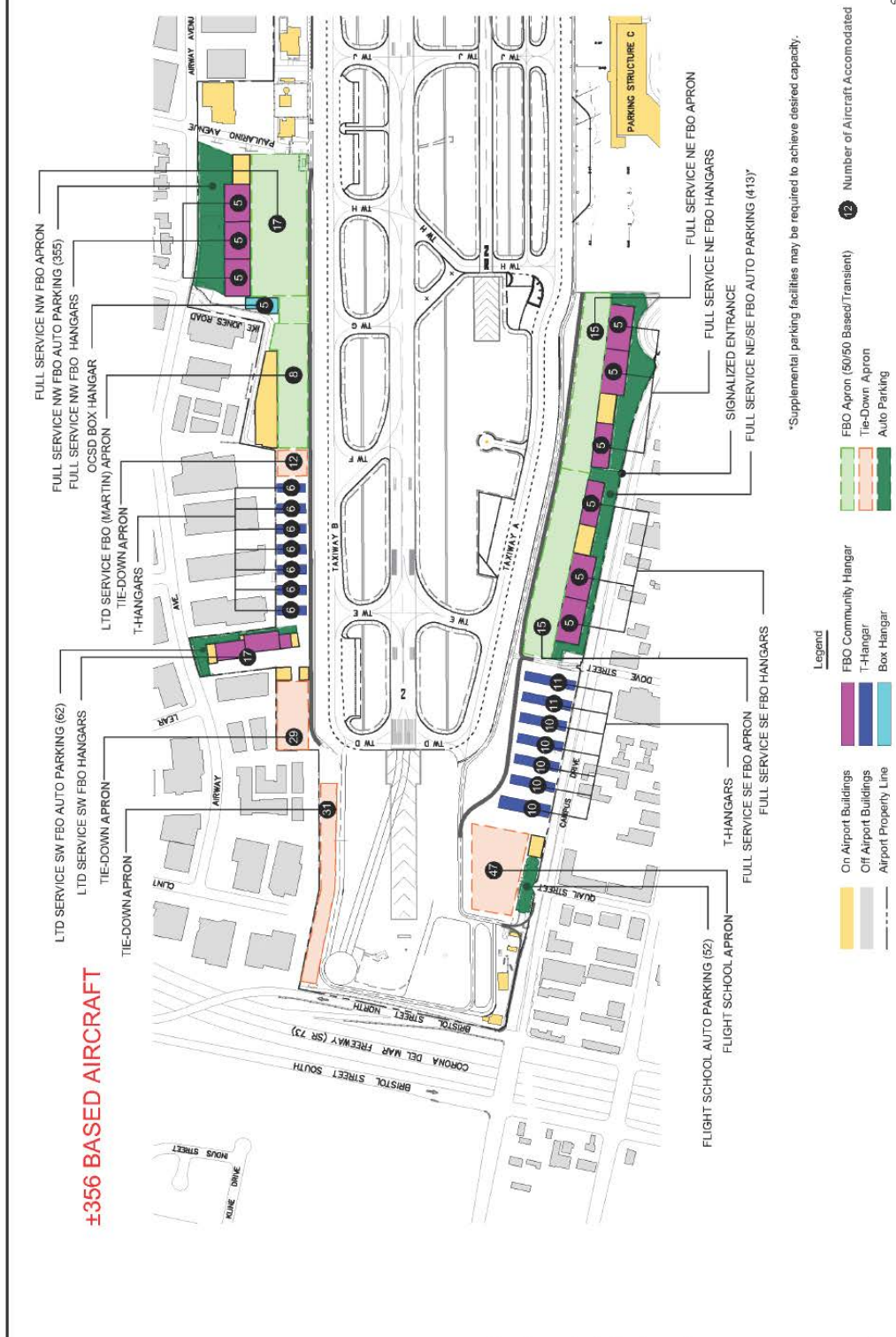
Exhibit 3-1



Conceptual Facilities Layout - Proposed Project

John Wayne Airport General Aviation Improvement Program





±356 BASED AIRCRAFT

- Legend**
- On Airport Buildings
 - Off Airport Buildings
 - Airport Property Line
 - FBO Community Hangar
 - T-Hangar
 - Box Hangar
 - FBO Apron (60/60 Based/Transient)
 - Tie-Down Apron
 - Auto Parking
 - Number of Aircraft Accommodated

*Supplemental parking facilities may be required to achieve desired capacity.

Source: AECOM, 2018.

Conceptual Facilities Layout – Alternative 1

John Wayne Airport General Aviation Improvement Program

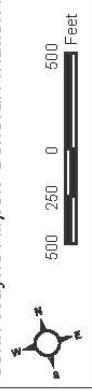
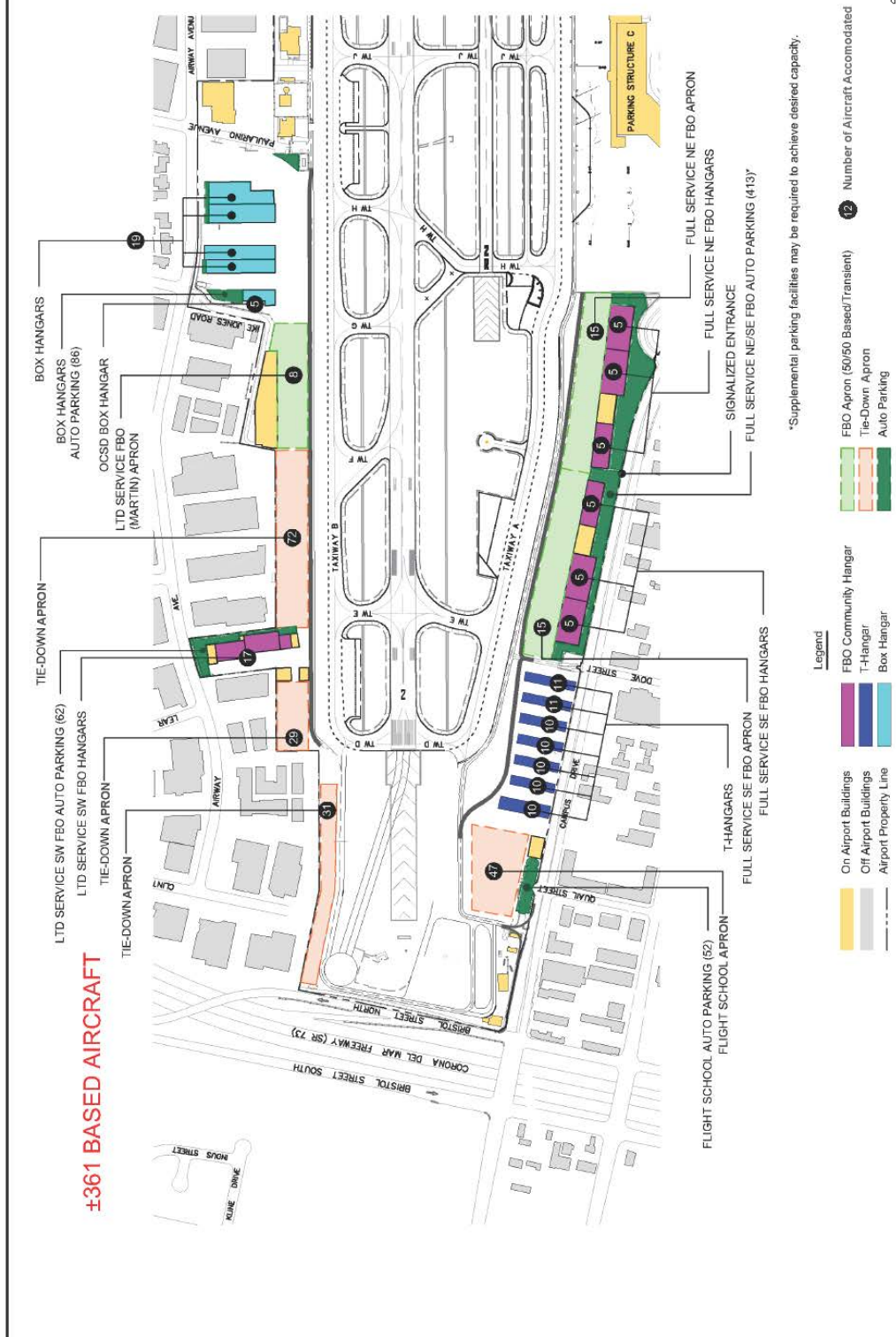


Exhibit 3-4





±361 BASED AIRCRAFT

FLIGHT SCHOOL AUTO PARKING (52)
 FLIGHT SCHOOL APRON
 T-HANGARS
 FULL SERVICE SE FBO HANGARS
 FULL SERVICE SE FBO APRON
 FULL SERVICE SE FBO HANGARS
 FULL SERVICE SE FBO AUTO PARKING (413)
 SIGNALIZED ENTRANCE
 FULL SERVICE NE FBO APRON
 FULL SERVICE NE FBO HANGARS
 FULL SERVICE NE FBO HANGARS
 PARKING STRUCTURE C

BOX HANGARS
 BOX HANGARS AUTO PARKING (86)
 OCSD BOX HANGAR
 LTD SERVICE FBO (MARTIN) APRON
 LTD SERVICE SW FBO AUTO PARKING (62)
 LTD SERVICE SW FBO HANGARS
 TIE-DOWN APRON
 TIE-DOWN APRON
 TIE-DOWN APRON

BRISTOL STREET SOUTH
 BRISTOL STREET NORTH
 CORONA DEL MAR FREEWAY (SR 73)
 QUAIL STREET
 CHAPIN DRIVE
 DOCK STREET
 TAXIWAY A
 TAXIWAY B
 TAXIWAY C
 TAXIWAY D
 TAXIWAY E
 TAXIWAY F
 TAXIWAY G
 TAXIWAY H
 TAXIWAY I
 TAXIWAY J
 TAXIWAY K
 TAXIWAY L
 TAXIWAY M
 TAXIWAY N
 TAXIWAY O
 TAXIWAY P
 TAXIWAY Q
 TAXIWAY R
 TAXIWAY S
 TAXIWAY T
 TAXIWAY U
 TAXIWAY V
 TAXIWAY W
 TAXIWAY X
 TAXIWAY Y
 TAXIWAY Z
 TAXIWAY AA
 TAXIWAY AB
 TAXIWAY AC
 TAXIWAY AD
 TAXIWAY AE
 TAXIWAY AF
 TAXIWAY AG
 TAXIWAY AH
 TAXIWAY AI
 TAXIWAY AJ
 TAXIWAY AK
 TAXIWAY AL
 TAXIWAY AM
 TAXIWAY AN
 TAXIWAY AO
 TAXIWAY AP
 TAXIWAY AQ
 TAXIWAY AR
 TAXIWAY AS
 TAXIWAY AT
 TAXIWAY AU
 TAXIWAY AV
 TAXIWAY AW
 TAXIWAY AX
 TAXIWAY AY
 TAXIWAY AZ
 TAXIWAY BA
 TAXIWAY BB
 TAXIWAY BC
 TAXIWAY BD
 TAXIWAY BE
 TAXIWAY BF
 TAXIWAY BG
 TAXIWAY BH
 TAXIWAY BI
 TAXIWAY BJ
 TAXIWAY BK
 TAXIWAY BL
 TAXIWAY BM
 TAXIWAY BN
 TAXIWAY BO
 TAXIWAY BP
 TAXIWAY BQ
 TAXIWAY BR
 TAXIWAY BS
 TAXIWAY BT
 TAXIWAY BU
 TAXIWAY BV
 TAXIWAY BW
 TAXIWAY BX
 TAXIWAY BY
 TAXIWAY BZ
 TAXIWAY CA
 TAXIWAY CB
 TAXIWAY CC
 TAXIWAY CD
 TAXIWAY CE
 TAXIWAY CF
 TAXIWAY CG
 TAXIWAY CH
 TAXIWAY CI
 TAXIWAY CJ
 TAXIWAY CK
 TAXIWAY CL
 TAXIWAY CM
 TAXIWAY CN
 TAXIWAY CO
 TAXIWAY CP
 TAXIWAY CQ
 TAXIWAY CR
 TAXIWAY CS
 TAXIWAY CT
 TAXIWAY CU
 TAXIWAY CV
 TAXIWAY CW
 TAXIWAY CX
 TAXIWAY CY
 TAXIWAY CZ
 TAXIWAY DA
 TAXIWAY DB
 TAXIWAY DC
 TAXIWAY DD
 TAXIWAY DE
 TAXIWAY DF
 TAXIWAY DG
 TAXIWAY DH
 TAXIWAY DI
 TAXIWAY DJ
 TAXIWAY DK
 TAXIWAY DL
 TAXIWAY DM
 TAXIWAY DN
 TAXIWAY DO
 TAXIWAY DP
 TAXIWAY DQ
 TAXIWAY DR
 TAXIWAY DS
 TAXIWAY DT
 TAXIWAY DU
 TAXIWAY DV
 TAXIWAY DW
 TAXIWAY DX
 TAXIWAY DY
 TAXIWAY DZ
 TAXIWAY EA
 TAXIWAY EB
 TAXIWAY EC
 TAXIWAY ED
 TAXIWAY EE
 TAXIWAY EF
 TAXIWAY EG
 TAXIWAY EH
 TAXIWAY EI
 TAXIWAY EJ
 TAXIWAY EK
 TAXIWAY EL
 TAXIWAY EM
 TAXIWAY EN
 TAXIWAY EO
 TAXIWAY EP
 TAXIWAY EQ
 TAXIWAY ER
 TAXIWAY ES
 TAXIWAY ET
 TAXIWAY EU
 TAXIWAY EV
 TAXIWAY EW
 TAXIWAY EX
 TAXIWAY EY
 TAXIWAY EZ
 TAXIWAY FA
 TAXIWAY FB
 TAXIWAY FC
 TAXIWAY FD
 TAXIWAY FE
 TAXIWAY FF
 TAXIWAY FG
 TAXIWAY FH
 TAXIWAY FI
 TAXIWAY FJ
 TAXIWAY FK
 TAXIWAY FL
 TAXIWAY FM
 TAXIWAY FN
 TAXIWAY FO
 TAXIWAY FP
 TAXIWAY FQ
 TAXIWAY FR
 TAXIWAY FS
 TAXIWAY FT
 TAXIWAY FU
 TAXIWAY FV
 TAXIWAY FW
 TAXIWAY FX
 TAXIWAY FY
 TAXIWAY FZ
 TAXIWAY GA
 TAXIWAY GB
 TAXIWAY GC
 TAXIWAY GD
 TAXIWAY GE
 TAXIWAY GF
 TAXIWAY GG
 TAXIWAY GH
 TAXIWAY GI
 TAXIWAY GJ
 TAXIWAY GK
 TAXIWAY GL
 TAXIWAY GM
 TAXIWAY GN
 TAXIWAY GO
 TAXIWAY GP
 TAXIWAY GQ
 TAXIWAY GR
 TAXIWAY GS
 TAXIWAY GT
 TAXIWAY GU
 TAXIWAY GV
 TAXIWAY GW
 TAXIWAY GX
 TAXIWAY GY
 TAXIWAY GZ
 TAXIWAY HA
 TAXIWAY HB
 TAXIWAY HC
 TAXIWAY HD
 TAXIWAY HE
 TAXIWAY HF
 TAXIWAY HG
 TAXIWAY HH
 TAXIWAY HI
 TAXIWAY HJ
 TAXIWAY HK
 TAXIWAY HL
 TAXIWAY HM
 TAXIWAY HN
 TAXIWAY HO
 TAXIWAY HP
 TAXIWAY HQ
 TAXIWAY HR
 TAXIWAY HS
 TAXIWAY HT
 TAXIWAY HU
 TAXIWAY HV
 TAXIWAY HW
 TAXIWAY HX
 TAXIWAY HY
 TAXIWAY HZ
 TAXIWAY IA
 TAXIWAY IB
 TAXIWAY IC
 TAXIWAY ID
 TAXIWAY IE
 TAXIWAY IF
 TAXIWAY IG
 TAXIWAY IH
 TAXIWAY II
 TAXIWAY IJ
 TAXIWAY IK
 TAXIWAY IL
 TAXIWAY IM
 TAXIWAY IN
 TAXIWAY IO
 TAXIWAY IP
 TAXIWAY IQ
 TAXIWAY IR
 TAXIWAY IS
 TAXIWAY IT
 TAXIWAY IU
 TAXIWAY IV
 TAXIWAY IW
 TAXIWAY IX
 TAXIWAY IY
 TAXIWAY IZ
 TAXIWAY JA
 TAXIWAY JB
 TAXIWAY JC
 TAXIWAY JD
 TAXIWAY JE
 TAXIWAY JF
 TAXIWAY JG
 TAXIWAY JH
 TAXIWAY JI
 TAXIWAY JJ
 TAXIWAY JK
 TAXIWAY JL
 TAXIWAY JM
 TAXIWAY JN
 TAXIWAY JO
 TAXIWAY JP
 TAXIWAY JQ
 TAXIWAY JR
 TAXIWAY JS
 TAXIWAY JT
 TAXIWAY JU
 TAXIWAY JV
 TAXIWAY JW
 TAXIWAY JX
 TAXIWAY JY
 TAXIWAY JZ
 TAXIWAY KA
 TAXIWAY KB
 TAXIWAY KC
 TAXIWAY KD
 TAXIWAY KE
 TAXIWAY KF
 TAXIWAY KG
 TAXIWAY KH
 TAXIWAY KI
 TAXIWAY KJ
 TAXIWAY KL
 TAXIWAY KM
 TAXIWAY KN
 TAXIWAY KO
 TAXIWAY KP
 TAXIWAY KQ
 TAXIWAY KR
 TAXIWAY KS
 TAXIWAY KT
 TAXIWAY KU
 TAXIWAY KV
 TAXIWAY KW
 TAXIWAY KX
 TAXIWAY KY
 TAXIWAY KZ
 TAXIWAY LA
 TAXIWAY LB
 TAXIWAY LC
 TAXIWAY LD
 TAXIWAY LE
 TAXIWAY LF
 TAXIWAY LG
 TAXIWAY LH
 TAXIWAY LI
 TAXIWAY LJ
 TAXIWAY LK
 TAXIWAY LL
 TAXIWAY LM
 TAXIWAY LN
 TAXIWAY LO
 TAXIWAY LP
 TAXIWAY LQ
 TAXIWAY LR
 TAXIWAY LS
 TAXIWAY LT
 TAXIWAY LU
 TAXIWAY LV
 TAXIWAY LW
 TAXIWAY LX
 TAXIWAY LY
 TAXIWAY LZ
 TAXIWAY MA
 TAXIWAY MB
 TAXIWAY MC
 TAXIWAY MD
 TAXIWAY ME
 TAXIWAY MF
 TAXIWAY MG
 TAXIWAY MH
 TAXIWAY MI
 TAXIWAY MJ
 TAXIWAY MK
 TAXIWAY ML
 TAXIWAY MN
 TAXIWAY MO
 TAXIWAY MP
 TAXIWAY MQ
 TAXIWAY MR
 TAXIWAY MS
 TAXIWAY MT
 TAXIWAY MU
 TAXIWAY MV
 TAXIWAY MW
 TAXIWAY MX
 TAXIWAY MY
 TAXIWAY MZ
 TAXIWAY NA
 TAXIWAY NB
 TAXIWAY NC
 TAXIWAY ND
 TAXIWAY NE
 TAXIWAY NF
 TAXIWAY NG
 TAXIWAY NH
 TAXIWAY NI
 TAXIWAY NJ
 TAXIWAY NK
 TAXIWAY NL
 TAXIWAY NN
 TAXIWAY NO
 TAXIWAY NP
 TAXIWAY NQ
 TAXIWAY NR
 TAXIWAY NS
 TAXIWAY NT
 TAXIWAY NU
 TAXIWAY NV
 TAXIWAY NW
 TAXIWAY NX
 TAXIWAY NY
 TAXIWAY NZ
 TAXIWAY OA
 TAXIWAY OB
 TAXIWAY OC
 TAXIWAY OD
 TAXIWAY OE
 TAXIWAY OF
 TAXIWAY OG
 TAXIWAY OH
 TAXIWAY OI
 TAXIWAY OJ
 TAXIWAY OK
 TAXIWAY OL
 TAXIWAY OM
 TAXIWAY ON
 TAXIWAY OO
 TAXIWAY OP
 TAXIWAY OQ
 TAXIWAY OR
 TAXIWAY OS
 TAXIWAY OT
 TAXIWAY OU
 TAXIWAY OV
 TAXIWAY OW
 TAXIWAY OX
 TAXIWAY OY
 TAXIWAY OZ
 TAXIWAY PA
 TAXIWAY PB
 TAXIWAY PC
 TAXIWAY PD
 TAXIWAY PE
 TAXIWAY PF
 TAXIWAY PG
 TAXIWAY PH
 TAXIWAY PI
 TAXIWAY PJ
 TAXIWAY PK
 TAXIWAY PL
 TAXIWAY PM
 TAXIWAY PN
 TAXIWAY PO
 TAXIWAY PP
 TAXIWAY PQ
 TAXIWAY PR
 TAXIWAY PS
 TAXIWAY PT
 TAXIWAY PU
 TAXIWAY PV
 TAXIWAY PW
 TAXIWAY PX
 TAXIWAY PY
 TAXIWAY PZ
 TAXIWAY QA
 TAXIWAY QB
 TAXIWAY QC
 TAXIWAY QD
 TAXIWAY QE
 TAXIWAY QF
 TAXIWAY QG
 TAXIWAY QH
 TAXIWAY QI
 TAXIWAY QJ
 TAXIWAY QK
 TAXIWAY QL
 TAXIWAY QM
 TAXIWAY QN
 TAXIWAY QO
 TAXIWAY QP
 TAXIWAY QQ
 TAXIWAY QR
 TAXIWAY QS
 TAXIWAY QT
 TAXIWAY QU
 TAXIWAY QV
 TAXIWAY QW
 TAXIWAY QX
 TAXIWAY QY
 TAXIWAY QZ
 TAXIWAY RA
 TAXIWAY RB
 TAXIWAY RC
 TAXIWAY RD
 TAXIWAY RE
 TAXIWAY RF
 TAXIWAY RG
 TAXIWAY RH
 TAXIWAY RI
 TAXIWAY RJ
 TAXIWAY RK
 TAXIWAY RL
 TAXIWAY RM
 TAXIWAY RN
 TAXIWAY RO
 TAXIWAY RP
 TAXIWAY RQ
 TAXIWAY RR
 TAXIWAY RS
 TAXIWAY RT
 TAXIWAY RU
 TAXIWAY RV
 TAXIWAY RW
 TAXIWAY RX
 TAXIWAY RY
 TAXIWAY RZ
 TAXIWAY SA
 TAXIWAY SB
 TAXIWAY SC
 TAXIWAY SD
 TAXIWAY SE
 TAXIWAY SF
 TAXIWAY SG
 TAXIWAY SH
 TAXIWAY SI
 TAXIWAY SJ
 TAXIWAY SK
 TAXIWAY SL
 TAXIWAY SM
 TAXIWAY SN
 TAXIWAY SO
 TAXIWAY SP
 TAXIWAY SQ
 TAXIWAY SR
 TAXIWAY SS
 TAXIWAY ST
 TAXIWAY SU
 TAXIWAY SV
 TAXIWAY SW
 TAXIWAY SX
 TAXIWAY SY
 TAXIWAY SZ
 TAXIWAY TA
 TAXIWAY TB
 TAXIWAY TC
 TAXIWAY TD
 TAXIWAY TE
 TAXIWAY TF
 TAXIWAY TG
 TAXIWAY TH
 TAXIWAY TI
 TAXIWAY TJ
 TAXIWAY TK
 TAXIWAY TL
 TAXIWAY TM
 TAXIWAY TN
 TAXIWAY TO
 TAXIWAY TP
 TAXIWAY TQ
 TAXIWAY TR
 TAXIWAY TS
 TAXIWAY TU
 TAXIWAY TV
 TAXIWAY TW
 TAXIWAY TX
 TAXIWAY TY
 TAXIWAY TZ
 TAXIWAY UA
 TAXIWAY UB
 TAXIWAY UC
 TAXIWAY UD
 TAXIWAY UE
 TAXIWAY UF
 TAXIWAY UG
 TAXIWAY UH
 TAXIWAY UI
 TAXIWAY UJ
 TAXIWAY UK
 TAXIWAY UL
 TAXIWAY UM
 TAXIWAY UN
 TAXIWAY UO
 TAXIWAY UP
 TAXIWAY UQ
 TAXIWAY UR
 TAXIWAY US
 TAXIWAY UT
 TAXIWAY UY
 TAXIWAY UZ
 TAXIWAY VA
 TAXIWAY VB
 TAXIWAY VC
 TAXIWAY VD
 TAXIWAY VE
 TAXIWAY VF
 TAXIWAY VG
 TAXIWAY VH
 TAXIWAY VI
 TAXIWAY VJ
 TAXIWAY VK
 TAXIWAY VL
 TAXIWAY VM
 TAXIWAY VN
 TAXIWAY VO
 TAXIWAY VP
 TAXIWAY VQ
 TAXIWAY VR
 TAXIWAY VS
 TAXIWAY VT
 TAXIWAY VU
 TAXIWAY VV
 TAXIWAY VW
 TAXIWAY VX
 TAXIWAY VY
 TAXIWAY VZ
 TAXIWAY WA
 TAXIWAY WB
 TAXIWAY WC
 TAXIWAY WD
 TAXIWAY WE
 TAXIWAY WF
 TAXIWAY WG
 TAXIWAY WH
 TAXIWAY WI
 TAXIWAY WJ
 TAXIWAY WK
 TAXIWAY WL
 TAXIWAY WM
 TAXIWAY WN
 TAXIWAY WO
 TAXIWAY WP
 TAXIWAY WQ
 TAXIWAY WR
 TAXIWAY WS
 TAXIWAY WT
 TAXIWAY WU
 TAXIWAY WV
 TAXIWAY WW
 TAXIWAY WX
 TAXIWAY WY
 TAXIWAY WZ
 TAXIWAY XA
 TAXIWAY XB
 TAXIWAY XC
 TAXIWAY XD
 TAXIWAY XE
 TAXIWAY XF
 TAXIWAY XG
 TAXIWAY XH
 TAXIWAY XI
 TAXIWAY XJ
 TAXIWAY XK
 TAXIWAY XL
 TAXIWAY XM
 TAXIWAY XN
 TAXIWAY XO
 TAXIWAY XP
 TAXIWAY XQ
 TAXIWAY XR
 TAXIWAY XS
 TAXIWAY XT
 TAXIWAY XU
 TAXIWAY XV
 TAXIWAY XW
 TAXIWAY XX
 TAXIWAY XY
 TAXIWAY XZ
 TAXIWAY YA
 TAXIWAY YB
 TAXIWAY YC
 TAXIWAY YD
 TAXIWAY YE
 TAXIWAY YF
 TAXIWAY YG
 TAXIWAY YH
 TAXIWAY YI
 TAXIWAY YJ
 TAXIWAY YK
 TAXIWAY YL
 TAXIWAY YM
 TAXIWAY YN
 TAXIWAY YO
 TAXIWAY YP
 TAXIWAY YQ
 TAXIWAY YR
 TAXIWAY YS
 TAXIWAY YT
 TAXIWAY YU
 TAXIWAY YV
 TAXIWAY YW
 TAXIWAY YX
 TAXIWAY YY
 TAXIWAY YZ
 TAXIWAY ZA
 TAXIWAY ZB
 TAXIWAY ZC
 TAXIWAY ZD
 TAXIWAY ZE
 TAXIWAY ZF
 TAXIWAY ZG
 TAXIWAY ZH
 TAXIWAY ZI
 TAXIWAY ZJ
 TAXIWAY ZK
 TAXIWAY ZL
 TAXIWAY ZM
 TAXIWAY ZN
 TAXIWAY ZO
 TAXIWAY ZP
 TAXIWAY ZQ
 TAXIWAY ZR
 TAXIWAY ZS
 TAXIWAY ZT
 TAXIWAY ZU
 TAXIWAY ZV
 TAXIWAY ZW
 TAXIWAY ZX
 TAXIWAY ZY
 TAXIWAY ZZ

Legend

- On Airport Buildings
- Off Airport Buildings
- Airport Property Line
- FBO Community Hangar
- FBO Based/Transient
- Tie-Down Apron
- Box Hangar
- T-Hangar
- Box Hangar

*Supplemental parking facilities may be required to achieve desired capacity.

Source: AECOM, 2018

Conceptual Facilities Layout - Alternative 2

John Wayne Airport General Aviation Improvement Program

Exhibit 5-1



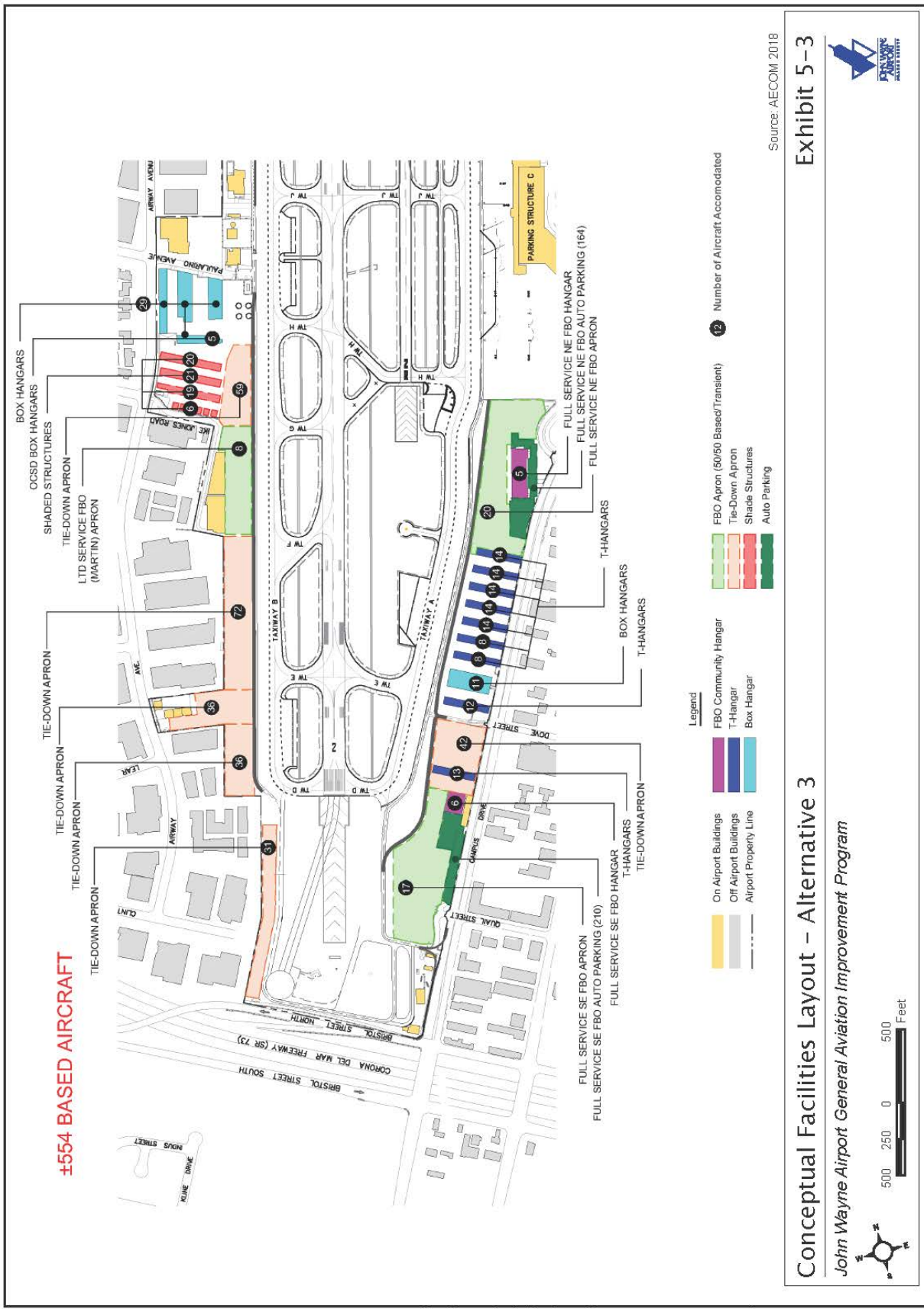


Exhibit 5-3



Conceptual Facilities Layout - Alternative 3

John Wayne Airport General Aviation Improvement Program



**TABLE 1-1
SUMMARY OF KEY DESIGN ELEMENTS FOR THE PROPOSED PROJECT AND ALTERNATIVES**

Facilities Layout	Proposed Project	Alternative 1	Alternative 2	Alternative 3	No Project Alternative
Brief Description	<ul style="list-style-type: none"> • 2 Full Service FBOs (1 Eastside and 1 Westside) • New GA Terminal/GAF at FBO • 1 Limited Service FBO • 1 Existing Limited Service FBO^a • Correction of 4 existing non-standard design features • 354 based aircraft • 167,900 annual operations 	<ul style="list-style-type: none"> • 3 Full Service FBOs (2 Eastside and 1 Westside) • New GA Terminal/GAF at FBO • 1 Limited Service FBO • 1 Existing Limited Service FBO^a • Correction of 4 existing non-standard design features • 356 based aircraft • 168,600 annual operations 	<ul style="list-style-type: none"> • 2 Full Service FBOs (Both Eastside) • New GA Terminal/GAF at FBO • 1 Limited Service FBO • 1 Existing Limited Service FBO^a • Correction of 4 existing non-standard design features • 361 based aircraft • 169,400 annual operations 	<ul style="list-style-type: none"> • 2 Existing Full Service FBOs (Both have presence on Eastside but one is split between east and west side) • 2 Existing Limited Service FBOs • No GA Terminal/GAF • Correction of 4 existing non-standard design features • 490 based aircraft • 197,600 annual operations 	<ul style="list-style-type: none"> • 2 Existing Full Service FBOs (Both have presence on Eastside but one is split between east and west side) • 2 Existing Limited Service FBOs • No GA Terminal/GAF • No correction of existing non-standard design features • 505 based aircraft • 201,000 annual operations
Full Service FBO Northwest	<ul style="list-style-type: none"> • 15 Aircraft in Hangars • 17 Based Aircraft on Apron • 21,653 SF FBO Terminal • 3,953 SF GA Terminal • 1,952 SF GAF • 355 Vehicle Parking Spaces 	<ul style="list-style-type: none"> • 15 Aircraft in Hangars • 17 Based Aircraft on Apron • 21,653 SF FBO Terminal • 3,953 SF GA Terminal • 1,952 SF GAF • 355 Vehicle Parking Spaces 	N/A	N/A	N/A
Full Service FBO Northeast	<ul style="list-style-type: none"> • 15 Aircraft in Hangars • 15 Based Aircraft on Apron • 21,653 SF FBO Terminal • 3,953 SF GA Terminal • 1,952 SF GAF • 246 Vehicle Parking Spaces 	<ul style="list-style-type: none"> • 15 Aircraft in Hangars • 15 Based Aircraft on Apron • 21,653 SF FBO Terminal • 3,953 SF GA Terminal • 1,952 SF GAF • 413 Shared Vehicle Parking Spaces 	<ul style="list-style-type: none"> • 15 Aircraft in Hangars • 15 Based Aircraft on Apron • 21,653 SF FBO Terminal • 3,953 SF GA Terminal • 1,952 SF GAF • 413 Shared Vehicle Parking Spaces 	<ul style="list-style-type: none"> • 5 Aircraft in Hangars • 20 Based Aircraft on Apron • 12,840 SF FBO Terminal • No GA Terminal • No GAF • 164 Vehicle Parking Spaces 	<ul style="list-style-type: none"> • 2 Aircraft in Community Hangars • 18 Based Aircraft on Apron • 12,840 SF FBO Terminal • No GA Terminal • No GAF • 164 Vehicle Parking Spaces
Full Service FBO Southeast	N/A	<ul style="list-style-type: none"> • 15 Aircraft in Hangars • 15 Based Aircraft on Apron • 21,653 SF FBO Terminal • 3,953 SF GA Terminal • 1,952 SF GAF • Vehicle parking shared with Full Service FBO NE 	<ul style="list-style-type: none"> • 15 Aircraft in Hangars • 15 Based Aircraft on Apron • 21,653 SF FBO Terminal • 3,953 SF GA Terminal • 1,952 SF GAF • Vehicle parking shared with Full Service FBO NE 	<ul style="list-style-type: none"> • 6 Aircraft in Hangars • 17 Based Aircraft on Apron • 4,740 SF FBO Terminal • No GA Terminal • No GAF • 210 Vehicle Parking Spaces 	<ul style="list-style-type: none"> • 23 Aircraft in Hangars • 17 Based Aircraft on Apron • 20,000 SF FBO Terminal • No GA Terminal • No GAF • 232 Vehicle Parking Spaces

**TABLE 1-1
SUMMARY OF KEY DESIGN ELEMENTS FOR THE PROPOSED PROJECT AND ALTERNATIVES**

Facilities Layout	Proposed Project	Alternative 1	Alternative 2	Alternative 3	No Project Alternative
Total Full Service FBOs	<ul style="list-style-type: none"> • 30 Aircraft in Hangars • 32 Based Aircraft on Apron • 43,306 SF FBO Terminal • 7,906 SF GA Terminal • 3,904 SF GAF • 601 Vehicle Parking Spaces 	<ul style="list-style-type: none"> • 45 Aircraft in Hangars • 47 Based Aircraft on Apron • 64,959 SF FBO Terminal • 11, 859 SF GA Terminal • 5,856 SF GAF • 768 Vehicle Parking Spaces 	<ul style="list-style-type: none"> • 30 Aircraft in Hangars • 30 Based Aircraft on Apron • 43,306 SF FBO Terminal • 7,906 SF GA Terminal • 3,904 SF GAF • 413 Vehicle Parking Spaces 	<ul style="list-style-type: none"> • 11 Aircraft in Hangars • 37 Based Aircraft on Apron • 17,580 SF FBO Terminal • No GA Terminal • No GAF • 374 Vehicle Parking Spaces 	<ul style="list-style-type: none"> • 25 Aircraft in Hangars • 35 Based Aircraft on Apron • 32,840 SF FBO Terminal • No GA Terminal • No GAF • 396 Vehicle Parking Spaces
Limited Service FBO Martin Aviation	<ul style="list-style-type: none"> • 8 Aircraft On Apron • 6 Aircraft in Hangar (Lyon Air Museum) • 80 Vehicle Parking Spaces 	<ul style="list-style-type: none"> • 8 Aircraft On Apron • 6 Aircraft in Hangar (Lyon Air Museum) • 80 Vehicle Parking Spaces 	<ul style="list-style-type: none"> • 8 Aircraft On Apron • 6 Aircraft in Hangar (Lyon Air Museum) • 80 Vehicle Parking Spaces 	<ul style="list-style-type: none"> • 8 Aircraft On Apron • 6 Aircraft in Hangar (Lyon Air Museum) • 80 Vehicle Parking Spaces 	<ul style="list-style-type: none"> • 8 Aircraft On Apron • 6 Aircraft in Hangar (Lyon Air Museum) • 80 Vehicle Parking Spaces
Limited Service FBO Southwest	<ul style="list-style-type: none"> • 17 Aircraft in Hangars • 62 Vehicle Parking Spaces 	<ul style="list-style-type: none"> • 17 Aircraft in Hangars • 62 Vehicle Parking Spaces 	<ul style="list-style-type: none"> • 17 Aircraft in Hangars • 62 Vehicle Parking Spaces 	<ul style="list-style-type: none"> • N/A^b • 8 Vehicle Parking Spaces 	<ul style="list-style-type: none"> • N/A^b • 8 Vehicle Parking Spaces
Box Hangars	<ul style="list-style-type: none"> • 30 Aircraft 	<ul style="list-style-type: none"> • 5 Aircraft^c 	<ul style="list-style-type: none"> • 19 Aircraft 	<ul style="list-style-type: none"> • 45 Aircraft 	<ul style="list-style-type: none"> • 45 Aircraft
T-Hangars	<ul style="list-style-type: none"> • 96 Aircraft Spaces 	<ul style="list-style-type: none"> • 114 Aircraft Spaces 	<ul style="list-style-type: none"> • 72 Aircraft Spaces 	<ul style="list-style-type: none"> • 111 Aircraft Spaces 	<ul style="list-style-type: none"> • 111 Aircraft Spaces
Tie-downs	<ul style="list-style-type: none"> • 88 Aircraft Spaces 	<ul style="list-style-type: none"> • 72 Aircraft Spaces 	<ul style="list-style-type: none"> • 132 Aircraft Spaces 	<ul style="list-style-type: none"> • 276 Aircraft Spaces 	<ul style="list-style-type: none"> • 302 Aircraft Spaces
Shade Structures	<ul style="list-style-type: none"> • N/A 	<ul style="list-style-type: none"> • N/A 	<ul style="list-style-type: none"> • N/A 	<ul style="list-style-type: none"> • 66 Aircraft Spaces 	<ul style="list-style-type: none"> • 66 Aircraft Spaces
Flight School	<ul style="list-style-type: none"> • 47 Aircraft on Apron • 52 Vehicle Parking Spaces 	<ul style="list-style-type: none"> • 47 Aircraft on Apron • 52 Vehicle Parking Spaces 	<ul style="list-style-type: none"> • 47 Aircraft on Apron • 52 Vehicle Parking Spaces 	<ul style="list-style-type: none"> • Included with Southeast FBO 	<ul style="list-style-type: none"> • Included with Southeast FBO
OC Sherriff's Department	<ul style="list-style-type: none"> • 5 Aircraft in Hangar • 21 Vehicle Parking Spaces 	<ul style="list-style-type: none"> • 5 Aircraft in Hangar • 21 Vehicle Parking Spaces 	<ul style="list-style-type: none"> • 5 Aircraft in Hangar • 20 Vehicle Parking Spaces 	<ul style="list-style-type: none"> • Included with Northeast FBO (west side operation) 	<ul style="list-style-type: none"> • Included with Northeast FBO (west side operation)
Self Serve Aircraft Fuel Station & Wash Rack	<ul style="list-style-type: none"> • 14,545 SF 	<ul style="list-style-type: none"> • 14,545 SF 	<ul style="list-style-type: none"> • 14,545 SF 	<ul style="list-style-type: none"> • N/A 	<ul style="list-style-type: none"> • N/A

^a There is one existing Limited Service FBO (Martin Aviation) that is not included in the GAIP because the lease extends to 2036, which is beyond the horizon year of the program. This Limited Service FBO is listed here to give a complete overview of general aviation facilities at JWA.

^b The hangar at the Limited Service FBO Southwest accommodates transient aircraft.

^c Alternative 1 provides a box hangar for use by the Orange County Sherriff's Department, which would accommodate five aircraft.

FBO: Fixed Based Operator; GA: General Aviation; GAF: General Aviation Facility; N/A: Not applicable; SF: square feet

Source: AECOM 2018

**TABLE 5-25
COMPATIBILITY COMPARISON OF ALTERNATIVES WITH PROJECT OBJECTIVES**

Project Objective	Proposed Project	Alternatives			
		1	2	3	No Project
1. To enhance safe and secure operations	●	●	●	●	○
2. To utilize limited land area efficiently and economically	●	●	●	◐	◐
3. To enhance compatibility between general and commercial aviation operations	●	●	●	◐	◐
4. To embrace flexibility to allow for technological advances and market trends	◐	●	◐	○	○
5. To maximize economic, self-sustaining, revenue-producing facilities	●	●	●	◐	◐
6. To assess the ability of existing infrastructure to support general aviation facilities	●	●	●	●	●
<p>Proposed Project—Redevelopment of the general aviation facilities, including the provision of two full service FBOs and one limited service FBO Alternative 1—Redevelopment of the general aviation facilities, including the provision of three full service FBOs and one limited service FBO Alternative 2—Redevelopment of the general aviation facilities, including the provision of two full service FBOs, both located on the east side of the Airport, and one limited service FBO Alternative 3—Only minor modifications to existing facilities needed to comply with FAA standards for airport design. No Project Alternative—No modifications or updating of facilities are proposed.</p> <p>Legend: ● = Fully Implements ◐ = Partially Implements ○ = Does Not Implement</p>					